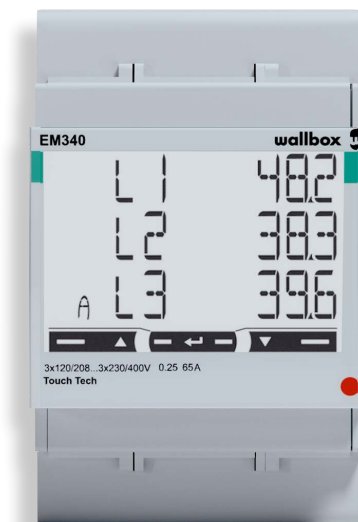


MID Meter Pulsar

External meter for company car driver billing

The MID Meter Pulsar enables precise billing of charging processes for the user's own company car. When connected directly upstream of the wallbox, the external energy meter, which is designed as a top-hat rail module, can measure currents of up to 65 A. The MID-compliant energy meter is set up for operation using the free myWallbox app and can then record the energy amounts for each individual charging session. The values determined with the MID Meter Pulsar can be exported via the app and then used for simple billing of electricity costs to the employer.



General information

Model	MID Meter Pulsar
Manufacturer number	MID-3P-65A
Product number	100000495
EAN number	8436575278049
Commodity code	90318080
Packaging dimensions (H×W×L)	65 × 110 × 166 mm
Weight (gross)	Approx. 0.5 kg
Packaging unit (PU)	1 unit
Items supplied	MID Meter Pulsar, installation instructions, operating instructions, contact protection

Mains power supply

Connection cross section in line with EN 60204	Up to 16 mm ²
Tightening torque for screw terminals	2.8 Nm
Starting current	20 mA
Power supply	209 ~ 400 V AC, VLL ± 20 %
Frequency	50 / 60 Hz
Internal consumption P _{max}	≤ 1 W

Compatibility

Compatible model series	Wallbox ABL Pulsar
-------------------------	--------------------

Measuring circuit for measuring category III

Limit current I_N / phase	65 A
Rated voltage	401 V AC, VLL \pm 20 %
Frequency	50 / 60 Hz

Measured values and measurement accuracy

Voltage	\pm 0.5 %*
Current	\pm 0.5 %*
Active power	\pm 1.0 %*
Reactive power	\pm 2.0 %*
Power factor	\pm 1.0 %*
Active energy	Class 1
Reactive energy	Class 2

Operating conditions

Ambient temperature during transportation / storage	-30 to 80°C
Operating temperature	-25 to 55°C
Relative humidity	1 to 90 %
Class of protection	III
IP rating	IP52

Housing

Type	Top hat rail module
Fixing type	TH35 top hat rail
Housing material	Polyphenylene oxide, UL 94 V-1
Housing colour	White
Interfaces	1 \times RS486
Net dimensions (H \times W \times D)	91 \times 54 \times 63 mm
Weight (net)	0.2 kg

Subject to change: All performance characteristics, technical and other specifications are subject to change without prior notice.

Revision status ABL_100000495_DE_a, 03/24

ABL GmbH • Albert-Büttner-Straße 11 • D-91207 Lauf / Pegnitz • Tel. +49 (0) 9123 188-0 • info@abl.de • www.abl.de • www.ablmobility.de