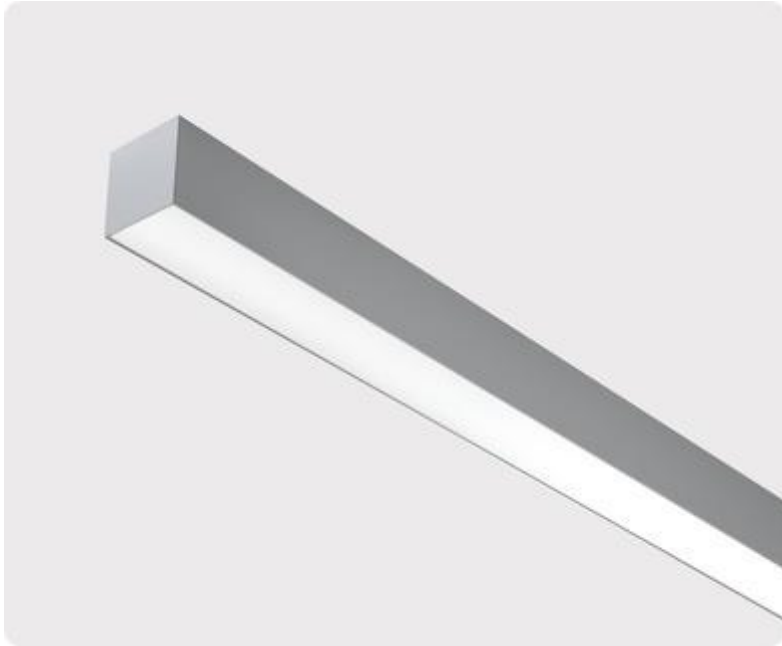


lightnet

Matric-A5

Surface mounted light-line - Direct light distribution

Article code: LA5AEL-840H-L1182



Illustrations may only be similar and serve as an orientation.

Matric-A5. LED. Wall or ceiling mounted light-line. Luminaire body made of high-quality aluminum profile. Surface finish Silver Anodised. Direct only light distribution. Colour temperature: 4000K (Cool White). Colour Rendering Index (CRI): >80. Microprismatic screen for uniform illumination and $\epsilon X^3 O y$ reduced luminance in office areas. Dimmable DALI. LxWxH (rectangular). L=1182mm. W=81mm. H=81mm. High-power

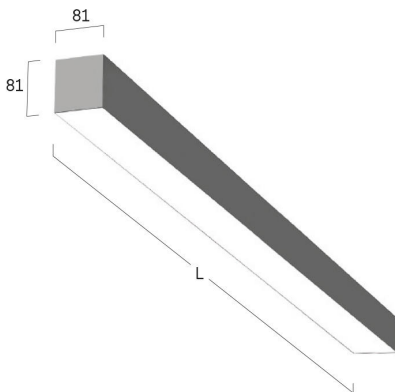
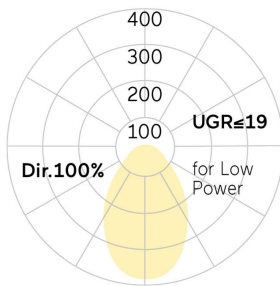
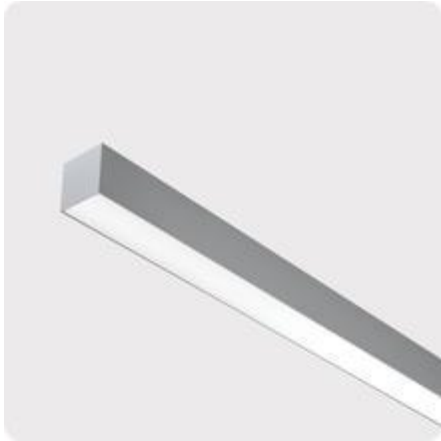
current. 4020lm. 40W. 4kg. Binning initial \leq MacAdam 3. IP20. Protection class I. CE, UKCA marking. Prüfzeichen: ENEC. IK02. 220-240V. 50-60 Hz. RG0 (EN62471). Luminous flux reduction up to 0,4%/1.000 operating hours. Nominal failure rate: 0,2%/1.000 operating hours. L80B10 (tq 25°C) = 50.000h. 5 years warranty. Manufacturer: Lightnet GmbH, ISO 9001:2015 certificated

lightnet

Matric-A5

Surface mounted light-line - Direct light distribution

Article code: LA5AEL-840H-L1182



Customer / Project: _____

Note: _____

Productname	Matric-A5
Lamp	LED
Installation Type	Surface mounted light-line
Surface finish	Silver Anodised
Light characteristics	Direct light distribution
Colour temperature	4000K
Colour Rendering Index (CRI)	CRI>80
Optical system	Microprismatic screen
Control	Dimmable (DALI)
Length L/Diameter D (mm)	L=1182mm
Width W (mm)	W=81mm
Height H (mm)	H=81mm
Current/Power	High-Power
Luminous Flux	4020lm
Power consumption	40W
Degree of protection	IP20
Certification	Prüfzeichen: ENEC
LED lifetime	L80B10 (tq 25°C) = 50.000h
Photometric code	8 40 / 3 3 9
Photobiological class	RG0 (EN62471)
Indoor/Outdoor	Indoor: ta [ambient] max. 25°C
Weight (kg)	4kg

